



The experts between warm and cold  
Hinged doors for chill/cool and freezer rooms



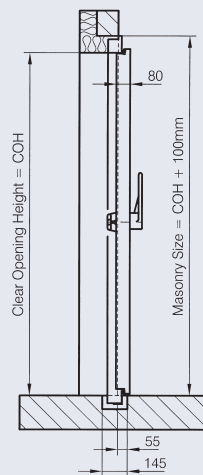
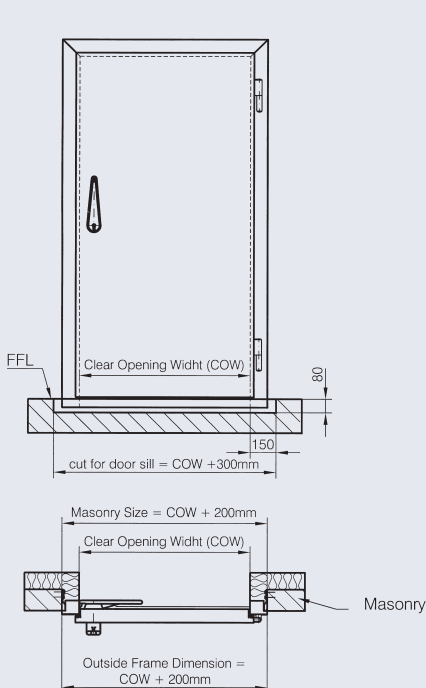
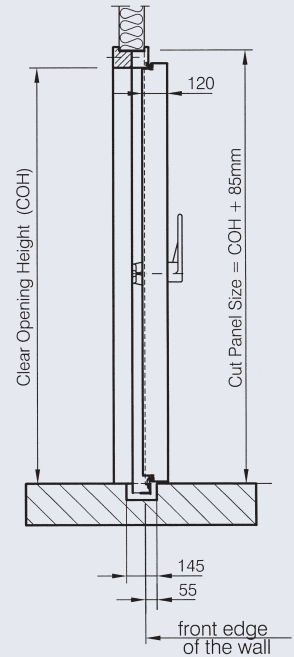
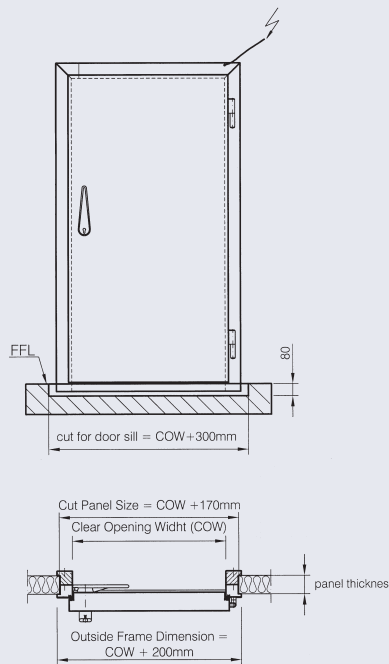
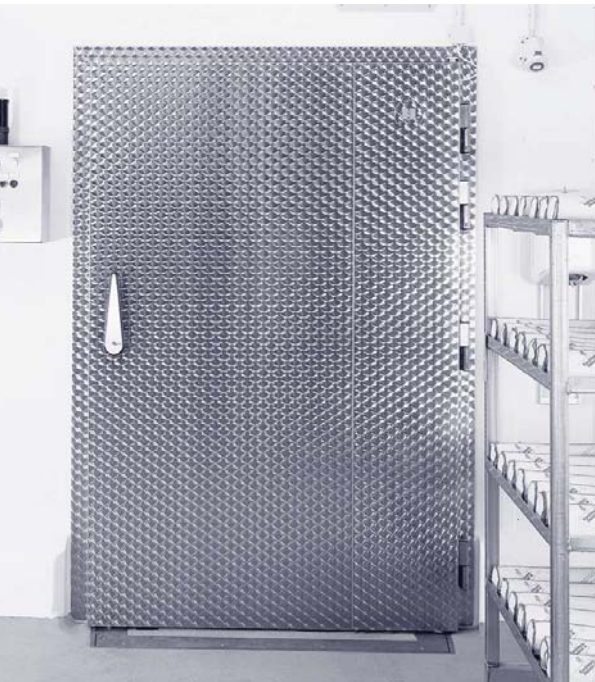


# Hinged doors for chill/cool and freezer rooms

For many years cool it doors have in practical applications, proved themselves down to the finest detail. High quality materials, smooth surfaces and superb workmanship guarantee

easy cleaning in environments where hygiene is essential. The rising, flush-fitted hinges and the cool it compression handle with integrated emergency release are designed and built

for a long and safe operating life. Versatile frame constructions and variable door sizes allow individually tailored installation in any location or situation.



Drawing above:  
Freezer room Hinged Door Type D12  
panel installation (clamping frame)

Left drawing:  
Chill room Hinged Door Type D8  
installation to masonry

## Door Leaf:

- 80mm (D8), 120mm (D12) or 160 mm (D16) door thickness
- cold-bridging prevention by PU (polyurethane) foam-filled door elements (CFC-free)
- with thermal-break and exchangeable rubber seals fitted into special profile carriers

## Surface:

- stainless steel sheet with circular-brush finish, matt-brush finish, strip finish and weave-embossed
- galvanized steel sheet coated in a choice of RAL colours
- galvanized steel sheet, laminated 150µm RAL 9001 (foodsafef)
- aluminium circular-brush finish

## Frame:

- anti-warp, sturdy metal frame in the same finish as the door leaf
- Polyurethane (PU) foam-filled (CFC free), with aluminium doorsill flush with the finished floor level
- for installation in masonry, wall anchors provided
- when equipped as a freezer room door, a thermal-break with exchangeable heater cable is integrated into the frame profile

## Clamping frame for panel installation:

- 3 part frame profile as a sub frame
- made of 1.5 mm stainless steel sheet or galvanized steel covered with RAL 9002/9010, with matching capping jambs in the same material.
- for freezer room doors the clamping-frame is insulated

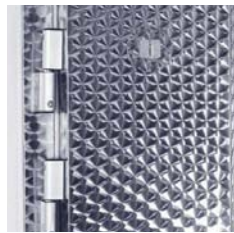
## Fittings:

- the door is operated via sturdy cool it compression lever
- locking by Euro profile cylinder as standard
- inside lever fitted with integrated emergency release
- flush fitted rising hinges made of stainless steel and plastic material
- with the double leaf version, the passive leaf is locked by means of a full height shootbolt

## Options:

- double leaf version
- various arrangements for meat-rail throughput
- a wide variety of frame designs to fit all possible situations
- inward opening version

*(Technical data subject to change)*





cool it Isoliersysteme GmbH  
Ochsenweg 18 • 49324 Melle  
Germany

Tel. : +49(0) 54 22/60 9-0  
Fax: +49(0) 54 22/60 9-35

[www.coolit.de](http://www.coolit.de)  
[info@coolit.de](mailto:info@coolit.de)